



ASKFOOD 12.02.2021

Together for Healthier **Lives in Europe**

Where did it all begin?

- EIT set up in 2005 as a Europe-wide research powerhouse to rival the Massachusetts Institute of Technology (MIT).
- It has become Europe's largest innovation network, bringing together over 1,000 partners collaborating to find innovative solutions to pressing global challenges.
- Established in 2015, EIT Health is focussed on answering some of Europe's biggest health challenges.



Our approach

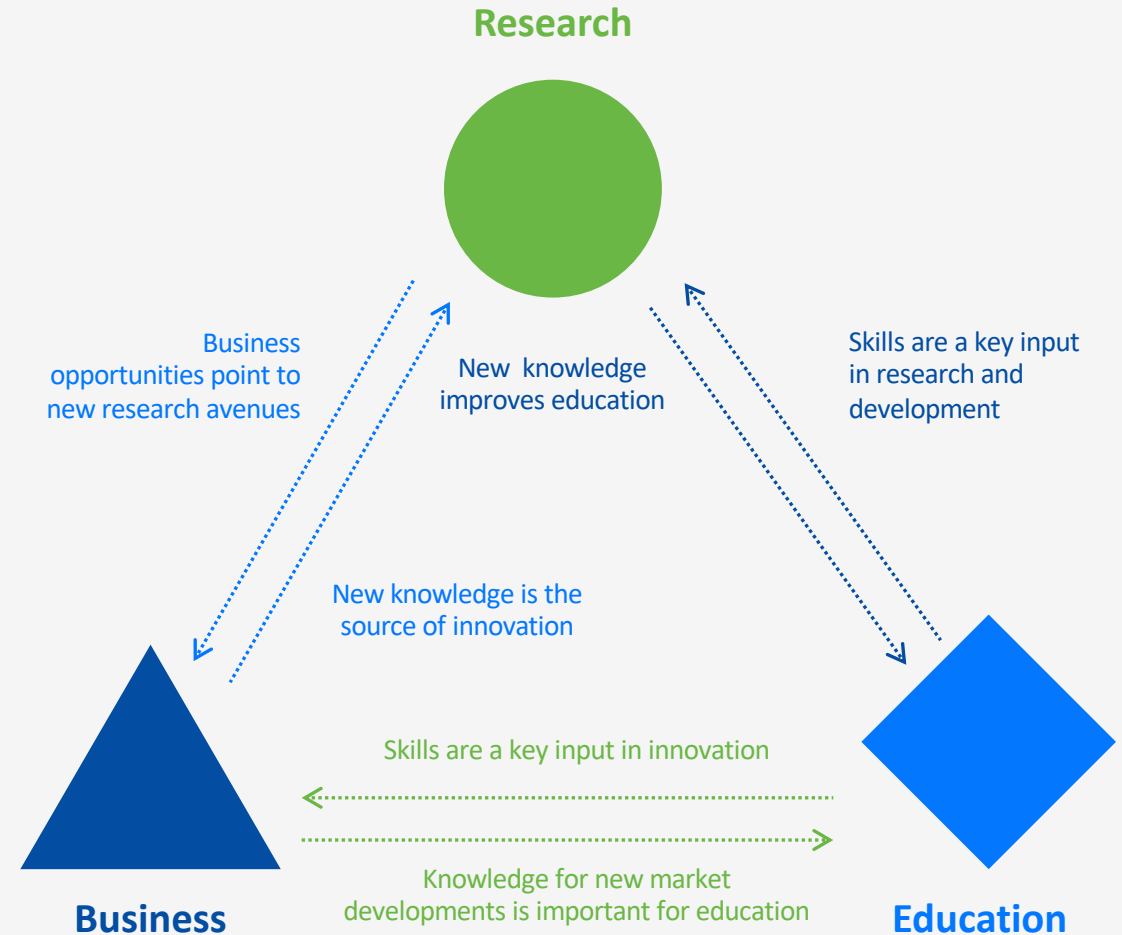
We identify unmet needs and initiate innovation to solve Europe's biggest health challenges today, and in the future.

Our community includes approximately 150 world-class partner organisations, and works across borders to connect business, research and education.

We call this meeting point the 'knowledge triangle', where life-changing innovation happens.

We create an environment where the brightest minds can explore new ideas, allowing a new type of healthcare to thrive for the benefit of citizens.

We empower a network of innovators to break down barriers, challenge convention and take action to put life-changing products and services into citizens' hands.



Our presence

EIT Health supports cross-border collaboration.

Six regional innovation hubs

Operate as strong clusters of relevant actors collaborating as a thriving ecosystem.

InnoStars

Headquartered in Budapest, EIT Health InnoStars spans several geographic regions in Hungary, Italy, Poland and Portugal.

Regional Innovation Scheme (RIS) (Pink pins)

EIT Health has expanded the community's presence with a EIT Health Regional Innovation Scheme in 13 regions across Central, Eastern and Southern Europe.

Beyond Europe (Cyan pin)

Further hubs in the United States and Israel, connect innovators across Europe to other key thriving ecosystems beyond the EU.



EIT Health: Food and Nutrition



EIT Health Innovation

VALIDITHI

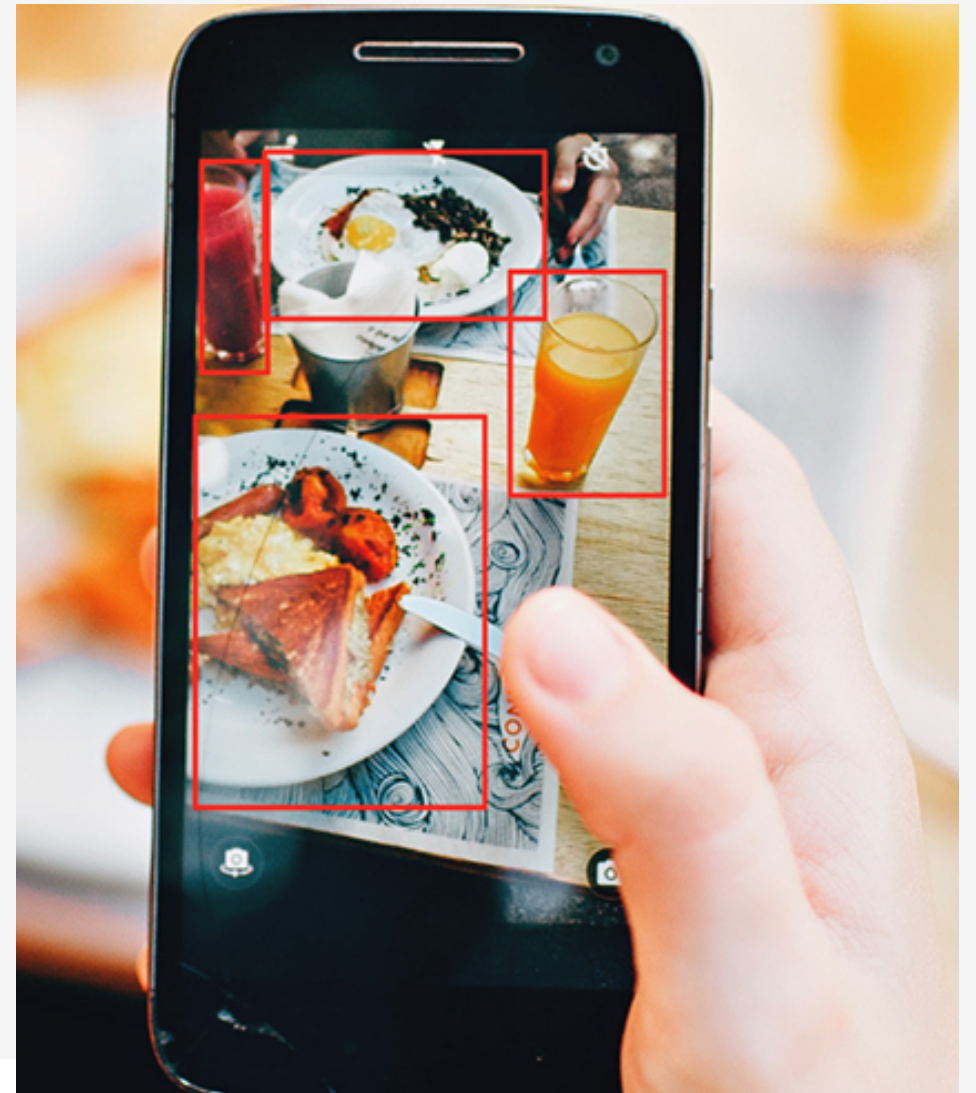
Validation of an innovative dietary intake tool for healthcare implementation

<https://eithealth.eu/project/validithi/>

Partners:



LogMeal



EIT Health Business Creation

GoodGut

Enhancing digestive health

<https://goodgut.eu/>



BIOMPRÈN
promovem idees, impulsem projectes



EIT Food & EIT Health Cross KIC Food4Health

Bringing innovations for healthy eating to
the market

STOP MetSyn

MuscleCancer

<https://eit-food4health.eu/>





lilisha.burris@eithealth.eu

www.eithealth.eu | info@eithealth.eu



Funded by the
European Union